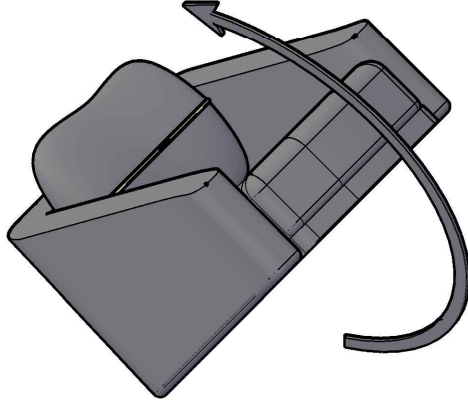
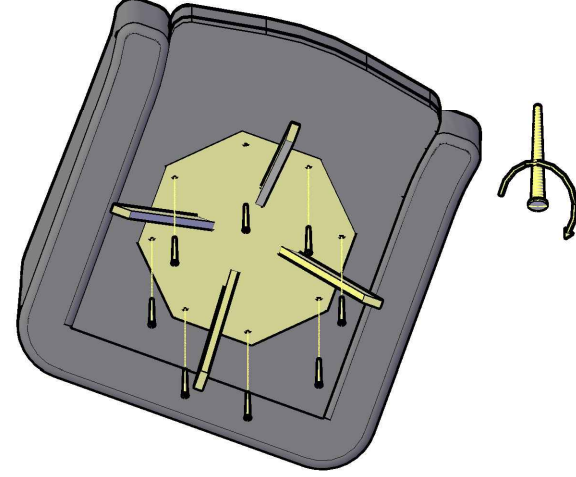


MONTAJ KLAVUZU

1. KOLTUĐU OK YÖNÜNDE ÇEVİRİN



2. 8 ADET VİDA VE TORNAVİDA YARDIMI İLE ŞEKİLDE GÖSTERİLDİĐİ GİBİ TAKILIR.



3. KOLTUĐU DİK KONUMA GETİRİN.



4. KOLTUĐUNUZ KULLANIMA HAZIR.

